



# ELECTRICAL HOT AIR GENERATOR

## Direct Heat Transfer Design:

Built on the principle of direct heat transfer through a fin tube heater in a 2 to 3 pass heat exchanger, ensuring the extended life of the electrical heater.

## Fully Automatic Operation:

Equipped with Thyristor and Power Controllers for precision and energy savings.

**Effortless Maintenance:** The entire heater bundle can be removed for maintenance with ease.

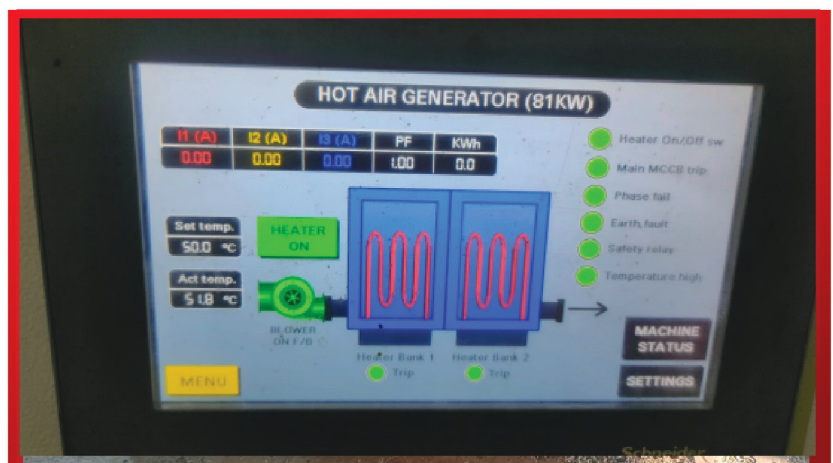
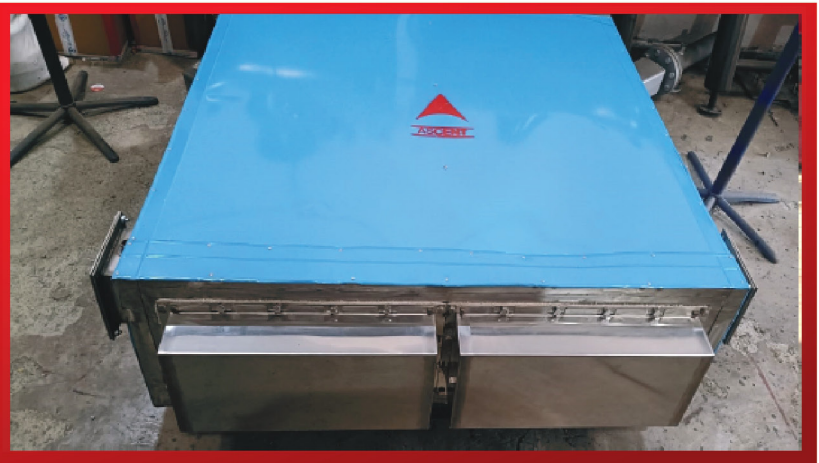
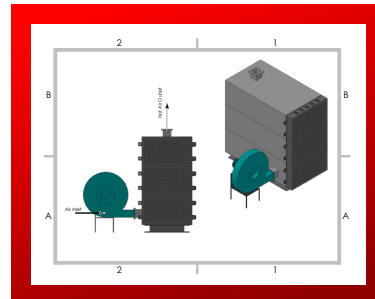
## Dual Temperature Controllers:

Inlet and outlet double temperature controllers provide double safety.

**Dry Run Protection:** A no-flow switch safeguards the heater against dry-run conditions.

**Customizable Models:** Available in both horizontal and vertical designs based on customer requirements.

**Automation Ready:** Optional PLC/HMI systems available for advanced automation needs.



# TECHNICAL DETAILS

Model No.	Unit	AHAE-21	AHAE-36	AHAE-54	AHAE126	AHAE-234	AHAE-360	AHAE-486	AHAE-594
Capacity	Kcal/hr	18,000	30,000	45,000	1,00,000	2,00,000	3,00,000	4,00,000	5,00,000
Heater	Kw/H	21	36	54	126	234	360	486	594
Blower	Hp	1	1	1.5	2	3	3	5	7.5

Higher capacity available on request.

## SALIENT FEATURES



**High Efficiency**  
98%



**Maintenance**  
Free



**Fully**  
Automatic



**Compact &**  
Skid-Mounted Design



**Clean and**  
Smokeless  
Operation



**Compact & Clean**  
so it can be  
installed anywhere

## CLIENTELE

### EXPORTS



sales@ascentmes.com



+91 88980 84020



www.ascentmes.com

Shop No. 2, 1st Floor, Nalanda Shopping Center, Station Road,  
Goregaon West, Mumbai - 400062, Maharashtra, India

